

# ANCHOR | RV-200

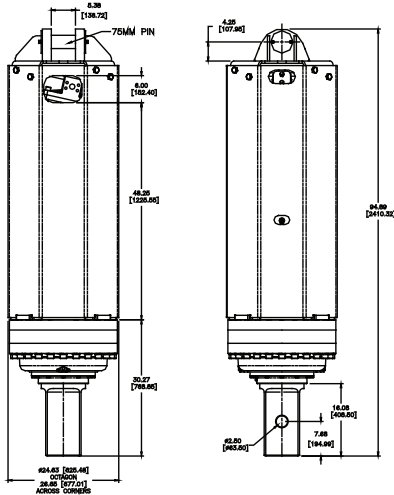
## FEATURES

- Highly Efficient Gearbox
- Variable Speed Piston Motor
- Quick Couplers Installed on Motor
- Transducer-Ready Ports; RevTrak Compatible

PART NO.	MODEL	CONNECTION	EXCAVATOR
610166	RV-200	200MM SQ	90T-150T

## ACCESSORIES

610309	RevTrak™ Monitoring System
610327	RV-200 Drive with RevTrak Installed
610202	Link Arm 75mm
660554	Pin Assembly 75mm



**REVOLUTION**  
SERIES

<b>TOTAL UNIT WEIGHT</b>	4200 LBS / 1905 Kg
<b>HYDRAULIC MOTOR INFORMATION</b>	
Displacement	13.73 cu/in (225cc)
Motor Type	Variable Speed Bi-Directional
Motor Output Shaft	13T 8/16 DP Spline
Motor Mount	SAE - D 4 Bolt
Motor Ports	Code 62 SAE Split Flange
Cross Over Pressure Relief	Not Equipped
<b>PLANETARY GEARBOX INFORMATION</b>	
Gearbox Type	Planetary Four Stage
Reduction Ratio	390.37:1
Output Shaft	200mm Square
Oil Capacity	13 Gallons
Oil Type	SAE 80W90 GL-5
Shaft Pull Out (lbs.)	300,000 lbs.

REFERENCE TORQUE CHART		
Pressure PSI (Bar)	High Torque (ft/lbs)	Low Torque (ft/lbs)
2800 (193)	165355	82677
2900 (200)	171261	85630
3000 (206)	177166	88583
3100 (213)	183072	91536
3200 (220)	188978	94489
3300 (227)	194883	97441
3400 (234)	200789	100394
3500 (241)	206694	103347

REFERENCE SPEED CHART		
Flow GPM (Liter)	Low Speed (rpm)	High Speed (rpm)
60 (227)	2	4
70 (264)	3	5
80 (302)	3	6
90 (340)	3	6
100 (378)	4	7

Output speed and torque specifications are NOT listed at 100% efficiency. Maximum efficiencies have been applied to the torque and speed charts according to the manufacturers recommendations. Speed and torque output are dependant on the overall system efficiencies associated with the prime movers hydraulic system. When the purchaser is determining criteria for specific applications please contact Pengo. Pengo has made every attempt to present accurate and suitable information published on this document. This document should be used for information and comparative purposed only. When application specific information is required, please contact Pengo.