

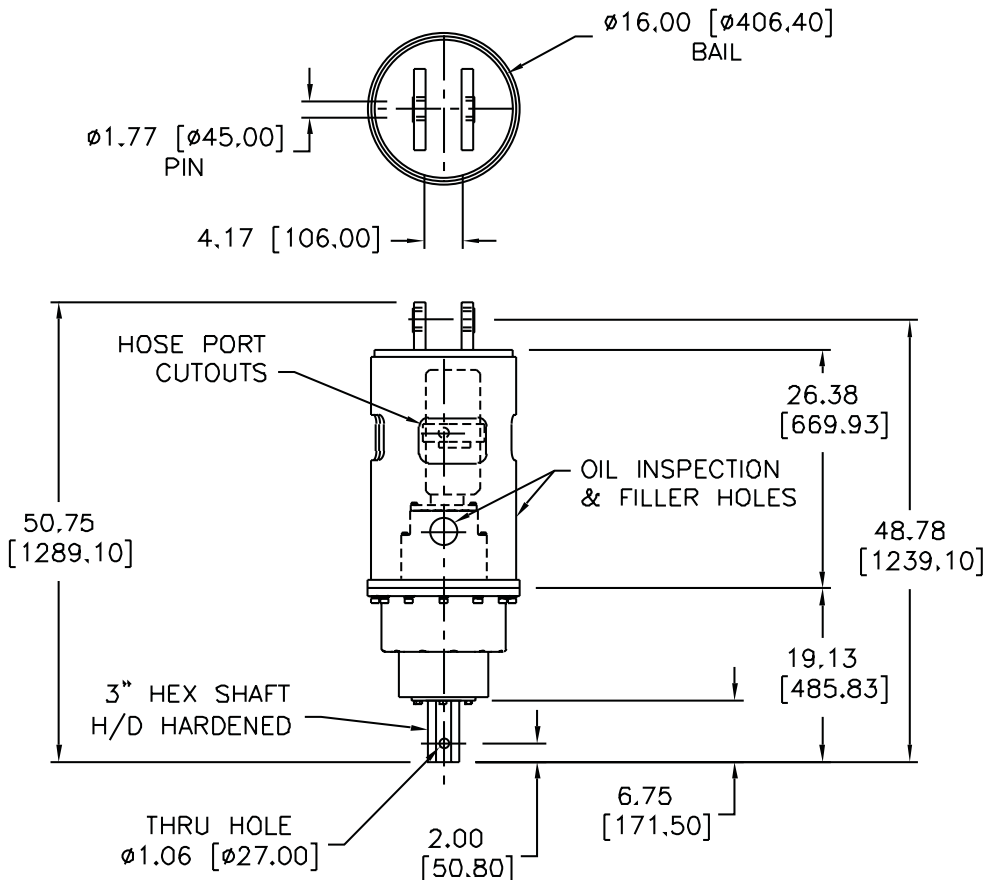
MDT-20K PLANETARY DRIVE - two speed

Pengo Part No. 660829 auto shift (20K, Closed Bail 45mm)

TECHNICAL SPECIFICATIONS

Motor Mount:	SAE "C" 4 BOLT
Motors:	TWO SPEED
Rated Output Torque:	20,000 / 10,000 FT-LB (27,000 / 13,500 N-m)
Max System Pressure:	3,000 psi (206 bar)
Max Flow:	40 GPM (151 lpm)
Output Shaft:	3" Hex Shaft (HARDENED)
Shaft Pull-Out Load:	45,000 lb (20,000 kg)
Shaft Pressure Load:	45,000 lb (20,000 kg)
Oil Capacity:	12.6 pts (6l)
Weight:	474 lbs (215 kg) with Hydraulic Motor
Gear Ratio:	31.03:1

Output speed and torque specifications are based on theoretical 100% values and are provided for comparative purposes only.



Note: MDT Units do not require a case drain.
MDT Units must have a minimum of 20GPM to operate properly.

Torque / Speed Chart

Reference Torque Chart (HT/LS)

Pressure (psi)	Torque (ft/lb)
1000	6532
1200	7839
1400	9145
1600	10452
1800	11758
2000	13065
2200	14371
2400	15678
2600	16984
2800	18291
3000	19597

Reference Torque Chart (LT/HS)

Pressure (psi)	Torque (ft/lb)
1000	3266
1200	3919
1400	4572
1600	5226
1800	5879
2000	6532
2200	7185
2400	7839
2600	8492
2800	9145
3000	9798

Reference Speed Chart (low)

Flow (gpm)	Speed (rpm)
20	9.38
25	11.73
30	14.07
35	16.42
40	18.77

Reference Speed Chart (high)

Flow (gpm)	Speed (rpm)
20	18.77
25	23.46
30	28.15
35	32.84
40	37.53

