

MDT-9K5 PLANETARY DRIVE - two speed

Pengo Part No. 660919 auto shift
(9K5, Closed Bail 45mm)

Torque / Speed Chart

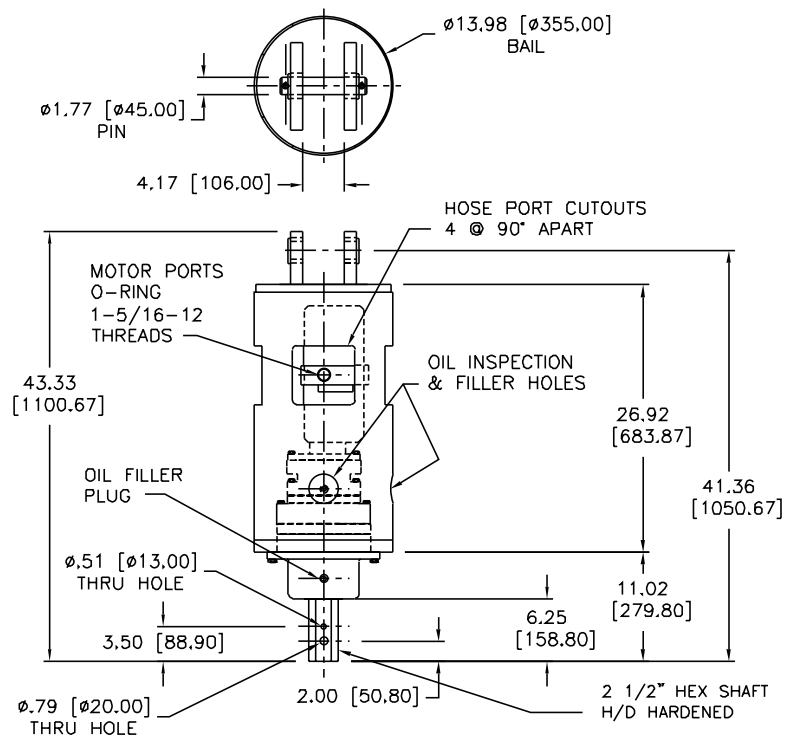
Pressure PSI	Low Torque in ft-lb	High Torque in ft-lb
1,000 PSI	2,077 ft-lb	4,154 ft-lb
1,100 PSI	2,285 ft-lb	4,569 ft-lb
1,200 PSI	2,492 ft-lb	4,985 ft-lb
1,300 PSI	2,700 ft-lb	5,400 ft-lb
1,400 PSI	2,908 ft-lb	5,818 ft-lb
1,500 PSI	3,115 ft-lb	6,231 ft-lb
1,600 PSI	3,323 ft-lb	6,646 ft-lb
1,700 PSI	3,531 ft-lb	7,061 ft-lb
1,800 PSI	3,738 ft-lb	7,471 ft-lb
1,900 PSI	3,946 ft-lb	7,892 ft-lb
2,000 PSI	4,154 ft-lb	8,308 ft-lb
2,100 PSI	4,362 ft-lb	8,723 ft-lb
2,200 PSI	4,569 ft-lb	9,138 ft-lb
2,300 PSI	4,777 ft-lb	9,554 ft-lb
2,400 PSI	4,985 ft-lb	9,969 ft-lb

Flow Rate GPM	Low Torque High RPM	High Torque Low RPM
40 GPM	52 RPM	26 RPM
35 GPM	45.5 RPM	22.7 RPM
30 GPM	39 RPM	19.5 RPM
25 GPM	32.5 RPM	12.5 RPM
20 GPM	26 RPM	13 RPM

TECHNICAL SPECIFICATIONS

Motor Mount:	SAE "C" 4 BOLT
Motors:	TWO SPEED
Rated Output Torque:	9,500 / 4,500 FT-LB (12,900 / 6,450 N-m)
Max System Pressure:	2,400 psi (165 bar)
Max Flow:	40 GPM (151 lpm)
Output Shaft:	2-1/2" Hex Shaft (HARDENED)
Shaft Pull-Out Load:	22,500 lb (10,000 kg)
Shaft Pressure Load:	22,500 lb (10,000 kg)
Oil Capacity:	4 pts (1.9l)
Weight:	253 lbs (115 kg) with Hydraulic Motor
Gear Ratio:	27.37:1

Output speed and torque specifications are based on theoretical 100% values and are provided for comparative purposes only.



Note: MDT Units do not require a case drain.
MDT Units must have a minimum of 20GPM to operate properly.



500 E. Highway 10, Laurens, IA 50554 - 800.599.0211
email: pengosales@paladinbrands.com www.pengoattachments.com