

AUGERS/DRILLING TOOLS

CS AUGER



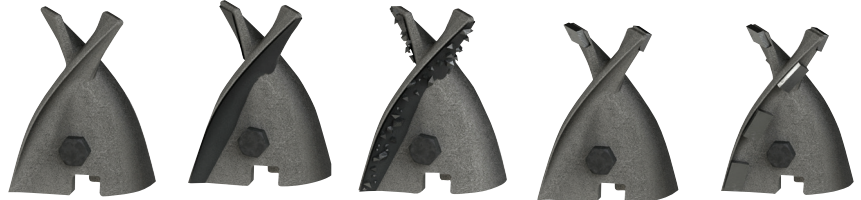
PARTS | Pilot Bits

FISH-TAIL PILOTS:
25 = 2.5", 35 = 3.5"
and 45 = 4.5"

ITEM		LBS	PART NO.
SB-25		.6 LBS	131740
SB-35		1.2 LBS	133402
SB-45		3 LBS	133407
SB-25 HF		.6 LBS	131740
SB-35 HF		2.1 LBS	133405
SB-45 HF		3.2 LBS	133410
SB-25 HFTC		1.4 LBS	132590
SB-35 HFTC		2.8 LBS	133406
SB-45 HFTC		3.2 LBS	133411
SB-25C		.3 LBS	132135
SB-35 C		1.2 LBS	133403
SB-45 C		3.1 LBS	133408
SB-25 CXC		1 LBS	132758



Pengo Pilots and Teeth are rated for drilling conditions that may or may not be applicable to your power source. Refer to the soil chart listed on page 2 of this catalog to determine which tooth type is right for the job.



Standard

Hardfaced (HF)

Hardfaced Tungsten Carbide (HFTC)

Carbide (C)

Carbide Tipped (CXC)

FAS-N-LOK



35 Dirt

5T30

35HF

35HFF

5T30HF

PARTS | Fas-N-Lok® Teeth

ITEM		LBS	PART NO.
35		.4 LBS	133835
5T30		.4 LBS	140029
35 HF		.6 LBS	140008
35 HFF		.6 LBS	140009
5T30 HF		.4 LBS	140014
35 C		.4 LBS	140007
5T30 C		.4 LBS	140012
1336L C		.6 LBS	140016
RB-5T30		.4 LBS	140013
RB-36LC		.6 LBS	140021



35C

5T30C

1336L C

RB-5T30

RB-36L C

DRIFT PUNCH

LBS | 1

PN | 137750

For Easy Removal of Teeth Use this Drift Punch.

SOFT HAMMER

LBS | 3.5

PN | 137737



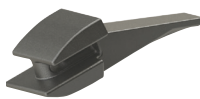
For Easy Installation of Fas-N-Lok® Teeth Use a soft hammer to prevent breaking of tips.

PARTS | Holders

T-35 HOLDER

LBS | 1

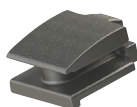
PN | 171221



T-36 HOLDER

LBS | 1

PN | 171231



PARTS | Drive Lugs

140 CS

LBS | 1

PN | 151930



140 S

LBS | .5

PN | 151940



GET ATTACHED!

The SB-25, -35 and -45 bits use the 140CS Pilot Bit Adapter PN 151930

GET TOUGH!

Shipped with standard pilot and teeth, you may order additional upgraded hard-faced or carbide parts for your tough drilling conditions.



AUGERS | 36" Overall Length

7/8" SQUARE CONNECTION

ITEM	DIA	NO. TEETH	LBS	PN
2-CS-36	2"	0	8	553295
3-CS-36	3"	0	10	553296
4-CS-36	4"	0	17	553297
6-CS-36	6"	1	18	553298
7-CS-36	7"	1	18	553299
8-CS-36	8"	2	23	553301
9-CS-36	9"	2	27	553302
10-CS-36	10"	2	27	553303
12-CS-36	12"	2	30	553304
14-CS-36	14"	2 out / 3 in	38	135902
16-CS-36	16"	2 out / 3 in	45	553306
18-CS-36	18"	2 out / 3 in	47	553307

1" ROUND CONNECTION

ITEM	DIA	NO. TEETH	LBS	PN
2-CS-36	2"	0	8	101368
3-CS-36	3"	0	10	101369
4-CS-36	4"	0	17	101370
6-CS-36	6"	1	18	101371
7-CS-36	7"	1	18	101372
8-CS-36	8"	2	23	101373
9-CS-36	9"	2	27	101374
10-CS-36	10"	2	27	101375
12-CS-36	12"	2	30	101376
14-CS-36	14"	2 out / 3 in	38	101377
16-CS-36	16"	2 out / 3 in	45	101378
18-CS-36	18"	2 out / 3 in	47	101379

Hub Connections:
 7/8" Square
 Groundhog,
 1" Round
 General,
 STIHL 1 1/4"
 Round,
 1 1/4" Square
 Little Beaver,
 1 3/8" Hex
 General,
 2" Pengo
 Collar

STIHL CONNECTION

ITEM	DIA	NO. TEETH	LBS	PN
2-CS-36	2"	0	8	101780
3-CS-36	3"	0	10	
4-CS-36	4"	0	17	101599
6-CS-36	6"	1	18	101652
7-CS-36	7"	1	18	
8-CS-36	8"	2	23	
9-CS-36	9"	2	27	
10-CS-36	10"	2	27	101727
12-CS-36	12"	2	30	101677
14-CS-36	14"	2 out / 3 in	38	
16-CS-36	16"	2 out / 3 in	45	101743
18-CS-36	18"	2 out / 3 in	47	

1 3/8" HEX CONNECTION

ITEM	DIA	NO. TEETH	LBS	PN
2-CS-36	2"	0	8	
3-CS-36	3"	0	10	
4-CS-36	4"	0	17	101697
6-CS-36	6"	1	18	101618
7-CS-36	7"	1	18	
8-CS-36	8"	2	23	101578
9-CS-36	9"	2	27	
10-CS-36	10"	2	27	101559
12-CS-36	12"	2	30	101546
14-CS-36	14"	2 out / 3 in	38	
16-CS-36	16"	2 out / 3 in	45	
18-CS-36	18"	2 out / 3 in	47	

The CS Auger item numbers are for standard augers only. These augers will be shipped with standard teeth and pilot. You may order additional upgraded wear parts to enhance the drilling capabilities of your auger.

1 1/4" SQUARE CONNECTION

ITEM	DIA	NO. TEETH	LBS	PN
2-CS-36	2"	0	8	102164
3-CS-36	3"	0	10	102165
4-CS-36	4"	0	17	101739
6-CS-36	6"	1	18	101602
7-CS-36	7"	1	18	101538
8-CS-36	8"	2	23	101544
9-CS-36	9"	2	27	101669
10-CS-36	10"	2	27	101535
12-CS-36	12"	2	30	101545
14-CS-36	14"	2 out / 3 in	38	102177
16-CS-36	16"	2 out / 3 in	45	
18-CS-36	18"	2 out / 3 in	47	

2" PENG0 COLLAR

ITEM	DIA	NO. TEETH	LBS	PN
2-CS-36	2"	0	8	101380
3-CS-36	3"	0	10	101381
4-CS-36	4"	0	17	101382
6-CS-36	6"	1	18	101383
7-CS-36	7"	1	18	101384
8-CS-36	8"	2	23	101385
9-CS-36	9"	2	27	101386
10-CS-36	10"	2	27	101387
12-CS-36	12"	2	30	101388
14-CS-36	14"	2 out / 3 in	38	101389
16-CS-36	16"	2 out / 3 in	45	101390
18-CS-36	18"	2 out / 3 in	47	101391

Special Orders Available upon request. Special orders cannot be canceled once ordered. Contact Pengo sales for special order requests.



AUGERS | 42" Overall Length

7/8" SQUARE CONNECTION

ITEM	DIA	NO. TEETH	LBS	PN
2-CS-42	2"	0	9	553311
3-CS-42	3"	0	11	133919
4-CS-42	4"	0	15	553313
6-CS-42	6"	1	20	553314
7-CS-42	7"	1	21	553316
8-CS-42	8"	2	25	553318
9-CS-42	9"	2	30	553319
10-CS-42	10"	2	30	553321
12-CS-42	12"	2	32	553323
14-CS-42	14"	2 out / 3 in	40	134711
16-CS-42	16"	2 out / 3 in	47	553324
18-CS-42	18"	2 out / 3 in	50	553326

1" ROUND CONNECTION

ITEM	DIA	NO. TEETH	LBS	PN
2-CS-42	2"	0	9	101392
3-CS-42	3"	0	11	101393
4-CS-42	4"	0	15	101394
6-CS-42	6"	1	20	101395
7-CS-42	7"	1	21	101396
8-CS-42	8"	2	25	101397
9-CS-42	9"	2	30	101398
10-CS-42	10"	2	30	101399
12-CS-42	12"	2	32	101400
14-CS-42	14"	2 out / 3 in	40	101401
16-CS-42	16"	2 out / 3 in	47	101402
18-CS-42	18"	2 out / 3 in	50	101403

Hub Connections:
 7/8" Square
 Groundhog,
 1" Round
 General,
 STIHL 1 1/4"
 Round,
 1 1/4" Square
 Little Beaver,
 1 3/8" Hex
 General,
 2" Pengo
 Collar

STIHL CONNECTION

ITEM	DIA	NO. TEETH	LBS	PN
2-CS-42	2"	0	9	
3-CS-42	3"	0	11	103244
4-CS-42	4"	0	15	102584
6-CS-42	6"	1	20	101616
7-CS-42	7"	1	21	
8-CS-42	8"	2	25	101642
9-CS-42	9"	2	30	
10-CS-42	10"	2	30	102063
12-CS-42	12"	2	32	101726
14-CS-42	14"	2 out / 3 in	40	
16-CS-42	16"	2 out / 3 in	47	102064
18-CS-42	18"	2 out / 3 in	50	101725

1 3/8" HEX CONNECTION

ITEM	DIA	NO. TEETH	LBS	PN
2-CS-42	2"	0	9	
3-CS-42	3"	0	11	
4-CS-42	4"	0	15	
6-CS-42	6"	1	20	101629
7-CS-42	7"	1	21	
8-CS-42	8"	2	25	101651
9-CS-42	9"	2	30	101701
10-CS-42	10"	2	30	101603
12-CS-42	12"	2	32	101604
14-CS-42	14"	2 out / 3 in	40	
16-CS-42	16"	2 out / 3 in	47	
18-CS-42	18"	2 out / 3 in	50	

The CS Auger item numbers are for standard augers only. These augers will be shipped with standard teeth and pilot. You may order additional upgraded wear parts to enhance the drilling capabilities of your auger.

1 1/4" SQUARE CONNECTION

ITEM	DIA	NO. TEETH	LBS	PN
2-CS-42	2"	0	9	
3-CS-42	3"	0	11	
4-CS-42	4"	0	15	102352
6-CS-42	6"	1	20	101558
7-CS-42	7"	1	21	
8-CS-42	8"	2	25	101577
9-CS-42	9"	2	30	101692
10-CS-42	10"	2	30	101678
12-CS-42	12"	2	32	101650
14-CS-42	14"	2 out / 3 in	40	
16-CS-42	16"	2 out / 3 in	47	102124
18-CS-42	18"	2 out / 3 in	50	101791

2" PENGO COLLAR

ITEM	DIA	NO. TEETH	LBS	PN
2-CS-42	2"	0	9	101404
3-CS-42	3"	0	11	101405
4-CS-42	4"	0	15	101406
6-CS-42	6"	1	20	101407
7-CS-42	7"	1	21	101408
8-CS-42	8"	2	25	101409
9-CS-42	9"	2	30	101410
10-CS-42	10"	2	30	101411
12-CS-42	12"	2	32	101412
14-CS-42	14"	2 out / 3 in	40	101413
16-CS-42	16"	2 out / 3 in	47	101414
18-CS-42	18"	2 out / 3 in	50	101415

Special Orders Available upon request. Special orders cannot be canceled once ordered. Contact Pengo sales for special order requests.