

AUGERS/DRILLING TOOLS

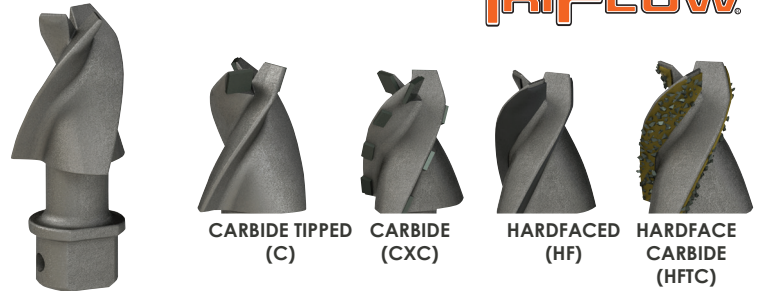
TRIMAX[®] AUGER



PARTS | Pilot Bits

TF-350		5	135088
TF-350C		5.5	135090
TF-350CXC		5.8	135091
TF-35HF		5.5	135089
TF-350HFTC		5.8	135092

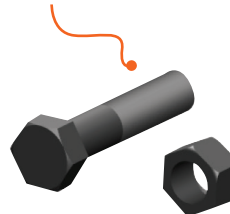
TRIFLOW



TF-350 Pilot Bit Assembly (includes nut and bolt) PN 137325

Pengo Pilots and Teeth are rated for drilling conditions that may or may not be applicable to your power source. Refer to the soil chart listed on page 2 of this catalog to determine which tooth type is right for the job.

Don't Forget the Nuts & Bolts!



3.5" Hex Bolt (6"-9" dia.)
PN 174447

4" Hex Bolt (12" plus dia.)
PN 174448

Hex Nut Lock
PN 134527

PARTS | Teeth

35		.4 LBS	PN 133835
5T30		.4 LBS	PN 140029
35 HF		.6 LBS	PN 140008
35 HFF		.6 LBS	PN 140009
5T30 HF		.4 LBS	PN 140014
35 C		.4 LBS	PN 140007
5T30 C		.4 LBS	PN 140012
1336L C		.6 LBS	PN 140016
RB-5T30		.4 LBS	PN 140013
RB-36LC		.6 LBS	PN 140021

FAS-N-LOK

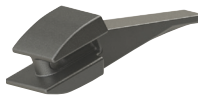


PARTS | Holders

T-35 HOLDER

LBS | 1

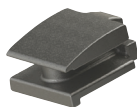
PN | 171221



T-36 HOLDER

LBS | 1

PN | 171231



ACCESSORIES

SOFT HAMMER

LBS | 3.5

PN | 137737



For Easy Installation of Fas-N-Lok[®] Teeth Use a soft hammer to prevent breaking of tips.

DRIFT PUNCH

LBS | 1

PN | 137750



For Easy Removal of Teeth Use this Drift Punch

TRIMAX



AUGERS | 42" Overall Length, Single Flight



ITEM	DIA	NO. TEETH	LBS	2" HEX PN	2 9/16" ROUND PN	2" ROUND PN
6-TM-42 S	6"	2	46	101318	552940	101324
8-TM-42 S	8"	4	55	101319	553071	CALL
9-TM-42 S	9"	4	59	552960	553072	101325
10-TM-42 S	10"	4	66	552962	553073	CALL
12-TM-42 S	12"	4	76	552964	553074	101326
14-TM-42 S	14"	6	91	552966	553075	CALL
16-TM-42 S	16"	6	97	552968	553076	CALL
18-TM-42 S	18"	6	112	552970	553077	CALL
20-TM-42 S	20"	6	117	552972	553078	CALL
24-TM-42 S	24"	8	151	552974	553079	CALL
30-TM-42 S	30"	10	168	101320	553080	CALL
36-TM-42 S	36"	12	270	101321	553081	CALL
42-TM-42 S	42"	15	302	101322	553082	CALL
48-TM-42 S	48"	18	380	101323	553083	CALL

All Teeth numbers listed above include two 37 Gage outside teeth.

AUGERS | 42" Overall Length, Double Flight

ITEM	DIA	NO. TEETH	LBS	2" HEX PN	2 9/16" ROUND PN	2" ROUND PN
6-TM-42 D	6"	2	52	101327	553464	CALL
8-TM-42 D	8"	4	59	101328	553465	CALL
9-TM-42 D	9"	4	74	101329	553466	CALL
10-TM-42 D	10"	4	77	101330	553467	CALL
12-TM-42 D	12"	4	88	101331	553468	CALL
14-TM-42 D	14"	6	102	101332	553469	CALL
16-TM-42 D	16"	6	116	101333	553470	CALL
18-TM-42 D	18"	6	129	101334	553471	CALL
20-TM-42 D	20"	6	135	101335	553472	CALL
24-TM-42 D	24"	8	156	101336	553473	CALL
30-TM-42 D	30"	10	173	101337	553474	CALL
36-TM-42 D	36"	12	284	101338	553475	CALL
42-TM-42 D	42"	15	343	101339	553476	CALL
48-TM-42 D	48"	18	406	102133	CALL	CALL

All Teeth numbers listed above include two 37 Gage outside teeth.

Call for 60" TriMax[®] part numbers. Special Orders Available upon request.
Special orders are non-cancelable.

TRIMAX[®] AUGER



AUGERS | 48" Overall Length, Single Flight

ITEM	DIA	NO. TEETH	LBS	2" HEX PN	2 9/16" ROUND PN	2" ROUND PN
6-TM-48 S	6"	2	49	101340	553090	101519
8-TM-48 S	8"	4	58	101341	553091	101700
9-TM-48 S	9"	4	62	101342	553092	101520
10-TM-48 S	10"	4	69	101343	553093	102045
12-TM-48 S	12"	4	79	101344	553094	101521
14-TM-48 S	14"	6	94	101345	553095	102122
16-TM-48 S	16"	6	100	101346	553096	CALL
18-TM-48 S	18"	6	115	101347	553097	102046
20-TM-48 S	20"	6	120	101348	553098	CALL
24-TM-48 S	24"	8	153	101349	553099	102047
30-TM-48 S	30"	10	171	101350	553100	CALL
36-TM-48 S	36"	12	273	101351	553101	CALL
48-TM-48 S	42"	15	305	101352	553102	CALL
48-TM-48 S	48"	18		101353	553103	CALL

All Teeth numbers listed above include two 37 Gage outside teeth.

AUGERS | 48" Overall Length, Double Flight

ITEM	DIA	NO. TEETH	LBS	2" HEX PN	2 9/16" ROUND PN	2" ROUND PN
6-TM-48 D	6"	2	58	101354	553480	101612
8-TM-48 D	8"	4	65	101355	553481	101613
9-TM-48 D	9"	4	80	101356	553482	CALL
10-TM-48 D	10"	4	83	101357	553483	102103
12-TM-48 D	12"	4	94	101358	553484	101617
14-TM-48 D	14"	6	108	101359	553485	102130
16-TM-48 D	16"	6	122	101360	553486	CALL
18-TM-48 D	18"	6	135	101361	553487	CALL
20-TM-48 D	20"	6	140	101362	553488	CALL
24-TM-48 D	24"	8	162	101363	553489	CALL
30-TM-48 D	30"	10	180	101364	553490	CALL
36-TM-48 D	36"	12	293	101365	553491	CALL
48-TM-48 D	42"	15	355	101366	553492	CALL
48-TM-48 D	48"	18		101367	553493	CALL

All Teeth numbers listed above include two 37 Gage outside teeth.

Call for 60" TriMax[®] part numbers. Special Orders Available upon request. Special orders are non-cancelable.

