

The descriptions and specifications in these instructions are subject to change without notice. PENGGO reserves the right to improve products. Some product improvements may have taken place after this was printed. For the latest information on PENGGO attachments, visit our web site at [www.pengoattachments.com](http://www.pengoattachments.com). **Thank you for buying and using PENGGO attachments!**

## READ INSTRUCTIONS PRIOR TO INSTALLATION

Improper installation, operation, or maintenance of the equipment could result in serious injury or death. Operators and maintenance personnel must read these instructions as well as the Pengo auger drive manual used with this equipment. **STRICTLY FOLLOW ALL SAFETY INSTRUCTIONS IN THIS MANUAL.**

## READ AND UNDERSTAND ALL SAFETY STATEMENTS

Read all safety decals and safety statements in this and all manuals concerning applicable drive units prior to operating or working on this equipment. Operators and maintenance personnel must know and follow good work practices when assembling, maintaining, repairing, mounting, removing or operating this equipment.

## KNOW YOUR EQUIPMENT

Visually inspect your equipment before you start, and never operate equipment that is not in proper working order. Check all hardware to assure it is tight. Make certain that all locking pins, latches, and connection devices are properly installed and secured. It is your responsibility to remove and replace any damaged, fatigued or excessively worn parts. Make certain all safety decals are in place and are legible. Keep decals clean, and replace them if they become worn and hard to read.

## DO NOT MODIFY EQUIPMENT

You are strictly prohibited from modifying any Pengo equipment. Modifications may weaken the integrity of the equipment and may impair the functions, safety, life, and performance of the equipment. When replacing parts, use only the manufacture's genuine parts, following these instructions. Failure to do so will void the warranty.

Part No. 661940



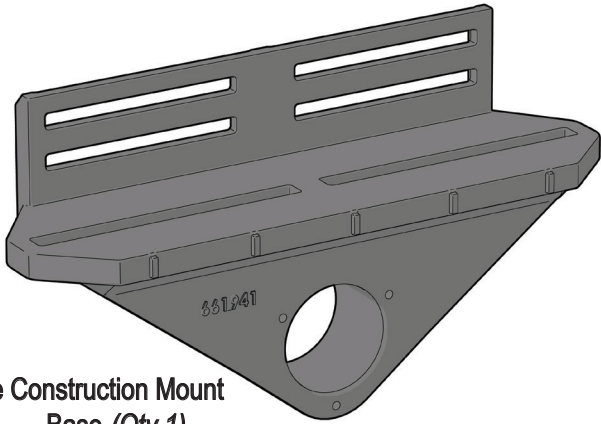
US Patent #9,926,685

**Mount Capacity is 16,000 ft/lbs  
torque and 1,000 lbs.**

PARTS LIST

US Patent #9,926,685

Included in Assembly #661940



**662000**  
Adjustable Construction Mount  
Base (Qty 1)



**662001**  
Adjustable Compact Mount Ear (Qty 2)



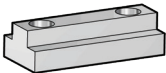
**174348**  
Hex Flat Head Screw 3/8-16 x 1 (Qty 12)



**661981**  
Hex Socket Head Cap Screw G8 3/4-10 x 2-1/2 (Qty 4)



**610855**  
Nord-Lock Washer 3/4" Pair (Qty 4)



**661979**  
Double T-Slot Nut 3/4-10 UNC (Qty 2)



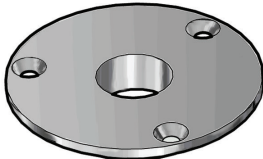
**610862**  
Hex Head Cap Screw GR9 1/2-13 UNC x 1-3/4 (Qty 8)



**610861**  
Nord-Lock Washer 1/2" Pair (Qty 8)



**610860**  
T-Slot Nut 1/2-13 UNC (Qty 8)



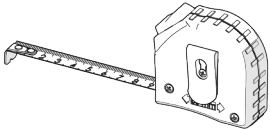
**661939**  
Adjustable Construction  
Mount Bottom Bushing (Qty 2)

TOOLS FOR ASSEMBLY & ADJUSTMENTS

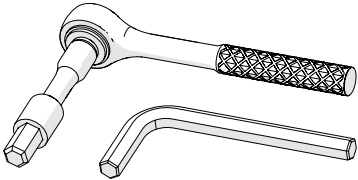
- 1/4" Hex Allen Wrench



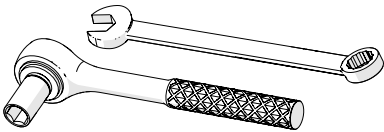
- Tape Measure



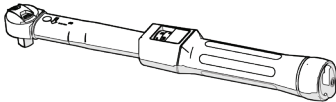
- 5/8" Hex Allen Wrench  
or  
Socket Wrench w/  
extension and 5/8" Hex  
bit Socket



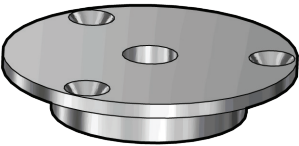
- 3/4" Hex Wrench  
or  
Socket Wrench with 3/4"  
Hex Socket



- Torque Wrench



Not Included - Sold Separately



**See Table\***  
Adjustable Compact Mount Bushing  
Top Ear Bushing (Qty 2)

Part No.	For Pin Size
661939	1.77" [45mm]
662275	1.97" [50mm]
662276	2.17" [55mm]
662277	2.36" [60mm]
662278	2.56" [65mm]
662279	2.76" [70mm]
662280	3.15" [80mm]
662281	3.54" [90mm]

## Assembly Instructions

**Failure to strictly follow these assembly instructions may result in serious injury or death!**

**1** Install lower bushings [661939] to Mount Base [662000]. Install bushings to Ears [662001]. The correct bushings to be installed are determined based on the end-of-stick pin diameter size of your prime mover. Fasten (1) bushing to each ear with (3) 3/8"-16 UNC flat socket head screws [174348] using 1/4" hex key. Tighten screws to 30 ft/lbs dry or 23 ft/lbs lubricated. (Figure 1A)

**2** Attach (2) Ears to Mount Base [662000] with Bushings facing out.  
Each Ear fastened to base through back of base using:

(4) 1/2"-13 UNC x 1-3/4" Hex Head Cap Screw [610862]

(4) 1/2" Nord-Lock Washers [610861]

(4) 1/2"-13 UNC T-Slot Nuts [610860]

And through bottom surface of base using:

(2) 3/4"-10 UNC Hex Socket Head Cap Screw [661981]

(2) 3/4" Nord-Lock Washers [610855]

(1) 3/4"-10 UNC Double T-Slot Nut [661979]

(Figure 2A & B)

### ATTENTION!

Tighten hardware so that the smaller widths of the T-Slot Nuts are seated into slots of base, but loose enough to allow ears to slide freely.

**3** Measure the width of the Excavator's stick that the Adjustable Mount is to be installed on. Center the two Ears on the mount base between 1/8" and 1/4" wider than width of the stick.

**4** Position the mount onto the stick aligning the holes through the bushings with the hole through the stick. Slide the pin through the ears and the end of excavator stick and lock pin into place. (Figure 3A)

**5** Tighten all of the screws to a near snug condition. Manipulate the mount clockwise and counter clockwise vigorously by hand to relieve any excess binding on any of the components. Moderately tighten the screws alternating back and forth between side to side in order from smaller screws to larger.

**6** Finally, tighten the 1/2"-13 hex head screws to 124 ft/lbs dry or 93 ft/lbs lubricated. Tighten the 3/4"-10 socket head screws to 380 ft/lbs dry or 280 ft/lbs lubricated.

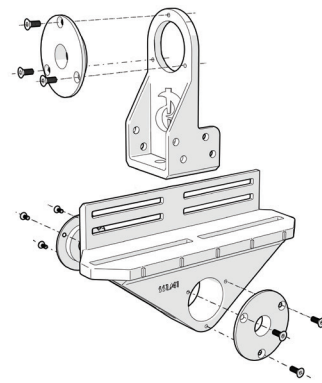


Figure 1A

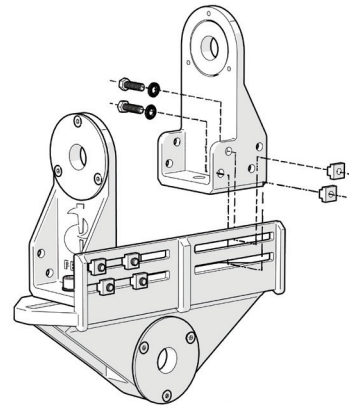


Figure 2A

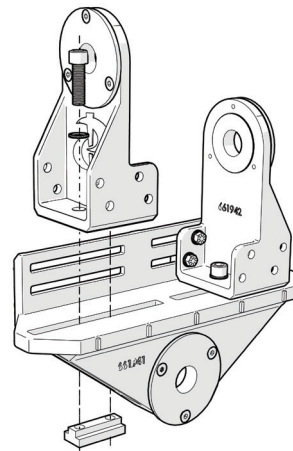


Figure 2B

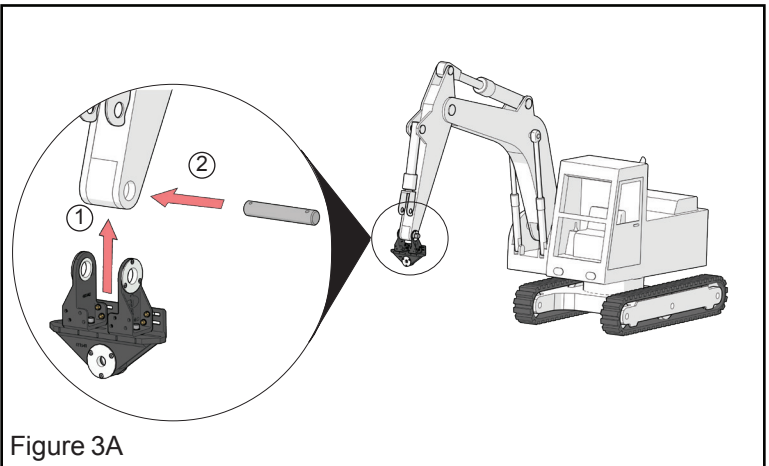


Figure 3A



**Headquarters**

**Iowa**

500 East Highway 10

Laurens, IA 50554

PH: 800-599-0211

FX: 800-915-6904

**Minnesota**

13369 60th St. S.W.

Cokato, MN 55321

PH: 888-286-0982

FX: 320-286-5583

[www.pengoattachments.com](http://www.pengoattachments.com)