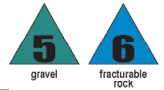


# S-PATTERN ROCK AUGER



## PARTS | Pilot Bits



**C31HD**  
with 1 Pin and Washer  
**LBS | 30**  
**PN | 135913**



**C31HD**  
with Nut and Bolt  
**LBS | 30**  
**PN | 135936**



**B47-10**  
with 4" square stem  
**LBS | 72**  
**PN | 137965**



**C4-1**  
with 2.5" square stem  
**LBS | 30**  
**PN | 135971**

**2.5 Adapter**  
**LBS | 17.84**  
**PN | 151598**

**2.5 Adapter**  
**LBS | 17.84**  
**PN | 151598**

**4" Adapter**  
**LBS | 43**  
**PN | 135904**

**2.5 Adapter**  
**LBS | 17.84**  
**PN | 151598**

## PARTS | Conical Teeth



**S31-HD**  
1" Shank  
**LBS | 1.1 ea.**  
**PN | 850037**

**35 pc. Bucket**  
**LBS | 38.5**  
**PN | 850210**

P30 Holder  
12 pc bucket  
PN 850224



**S-31**  
1" Shank  
**LBS | 1.05 ea.**  
**PN | 850026**

**35 pc. Bucket**  
**LBS | 36.75**  
**PN | 850208**

For 1" Shank Conical Teeth



**S-22**  
Step Shank  
**LBS | 2.6 ea.**  
**PN | 850039**

**10 pc. Bucket**  
**LBS | 26**  
**PN | NA**

P4 Holder  
8 pc bucket  
PN 850225



For Step Shank Conical Teeth



**SR-104**  
Step Shank  
**LBS | 2.6 ea.**  
**PN | 850024**

**15 pc. Bucket**  
**LBS | 37.95**  
**PN | 850207**

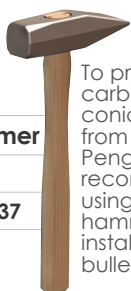


**S4-1**  
Step Shank  
**LBS | 2.6 ea.**  
**PN | 850038**

**15 pc. Bucket**  
**LBS | 39**  
**PN | 850211**

Pallet quantities available on conical teeth.

## ACCESSORIES | Installation & Removal Tools



**Soft Hammer**  
**LBS | 3.5**  
**PN | 137737**

To prevent carbide on conical teeth from breaking, Pengo highly recommends using a soft hammer during installation of bullet teeth.



**C30 Puller**  
For 1" Shank Conical Teeth  
**LBS | 3**  
**PN | 134090**



**BZ-12 Puller**  
For Step Shank Conical Teeth  
**LBS | 3**  
**PN | 850043**

For ease of conical tooth removal use these designated pullers for 1" and Step Shank Conical Teeth.

## TRIDENT

U.S. PATENT NO. D778,967

One Holder, Three Teeth for Pengo Foundation Augers!

**NRH-100**  
Fits 1" shank tooth  
**LBS | 2.4 ea.**  
**PN | 990088**



**NRW-100**  
**LBS | 1.33 ea.**  
**PN | 990098**



**SR-100**  
**LBS | .56 ea.**  
**PN | 850023**



**NR-100**  
**LBS | .99 ea.**  
**PN | 990092**



**NRH-3038**  
Fits Step shank tooth  
**LBS | 4.86 ea.**  
**PN | 990086**



**NRW-122**  
**LBS | 4.5 ea.**  
**PN | 990096**



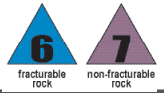
**SR-122**  
**LBS | 2.6 ea.**  
**PN | 850034**



**NR-122**  
**LBS | 2.46 ea.**  
**PN | 990089**



# DOUBLE ROW ROCK AUGER



## PARTS | Pilot Bits

<b>C31HD</b> with 1 Pin and Washer <b>LBS   30</b> <b>PN   135913</b>	<b>C31HD</b> with Nut and Bolt <b>LBS   30</b> <b>PN   135936</b>	<b>B47-10</b> with 4" square stem <b>LBS   72</b> <b>PN   137965</b>	<b>C4-1</b> with 2.5" square stem <b>LBS   30</b> <b>PN   135971</b>
<b>2.5 Adapter</b> <b>LBS   17.84</b> <b>PN   151598</b>	<b>2.5 Adapter</b> <b>LBS   17.84</b> <b>PN   151598</b>	<b>4" Adapter</b> <b>LBS   43</b> <b>PN   135904</b>	<b>2.5 Adapter</b> <b>LBS   17.84</b> <b>PN   151598</b>

## PARTS | Conical Teeth

<b>S31-HD</b> 1" Shank <b>LBS   1.1 ea.</b> <b>PN   850037</b>	<b>S-31</b> 1" Shank <b>LBS   1.05 ea.</b> <b>PN   850026</b>	<b>S-22</b> Step Shank <b>LBS   2.6 ea.</b> <b>PN   850039</b>	<b>SR-104</b> Step Shank <b>LBS   2.6 ea.</b> <b>PN   850024</b>	<b>S4-1</b> Step Shank <b>LBS   2.6 ea.</b> <b>PN   850038</b>
<b>35 pc. Bucket</b> <b>LBS   38.5</b> <b>PN   850210</b>	<b>35 pc. Bucket</b> <b>LBS   36.75</b> <b>PN   850208</b>	<b>10 pc. Bucket</b> <b>LBS   26</b> <b>PN   NA</b>	<b>15 pc. Bucket</b> <b>LBS   37.95</b> <b>PN   850207</b>	<b>15 pc. Bucket</b> <b>LBS   39</b> <b>PN   850211</b>
P30 Holder 12 pc bucket PN 850224	<i>For 1" Shank Conical Teeth</i>	P4 Holder 8 pc bucket PN 850225	<i>For Step Shank Conical Teeth</i>	Pallet quantities available on conical teeth.

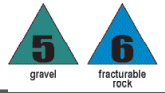
## ACCESSORIES | Installation & Removal Tools

<b>Soft Hammer</b> <b>LBS   3.5</b> <b>PN   137737</b>	<b>C30 Puller</b> For 1" Shank Conical Teeth <b>LBS   3</b> <b>PN   134090</b>	<b>BZ-12 Puller</b> For Step Shank Conical Teeth <b>LBS   3</b> <b>PN   850043</b>

To prevent carbide on conical teeth from breaking, Pengo highly recommends using a soft hammer during installation of bullet teeth.

For ease of conical tooth removal use these designated pullers for 1" and Step Shank Conical Teeth.

# MODERATE SPIRAL ROCK AUGER



## PARTS | Pilot Bits



**C31HD**  
with 1 Pin and Washer  
**LBS | 30**  
**PN | 135913**



**C31HD**  
with Nut and Bolt  
**LBS | 30**  
**PN | 135936**



**B47-10**  
with 4" square stem  
**LBS | 72**  
**PN | 137965**



**C4-1**  
with 2.5" square stem  
**LBS | 30**  
**PN | 135971**

**2.5 Adapter**  
**LBS | 17.84**  
**PN | 151598**

**2.5 Adapter**  
**LBS | 17.84**  
**PN | 151598**

**4" Adapter**  
**LBS | 43**  
**PN | 135904**

**2.5 Adapter**  
**LBS | 17.84**  
**PN | 151598**

## PARTS | Conical Teeth

**STRATA**



**S31-HD**  
1" Shank  
**LBS | 1.1 ea.**  
**PN | 850037**

**35 pc. Bucket**  
**LBS | 38.5**  
**PN | 850210**

P30 Holder  
12 pc bucket  
PN 850224



**S-31**  
1" Shank  
**LBS | 1.05 ea.**  
**PN | 850026**

**35 pc. Bucket**  
**LBS | 36.75**  
**PN | 850208**

For 1" Shank  
Conical Teeth



**S-22**  
Step Shank  
**LBS | 2.6 ea.**  
**PN | 850039**

**10 pc. Bucket**  
**LBS | 26**  
**PN | NA**

P4 Holder  
8 pc bucket  
PN 850225



For Step Shank  
Conical Teeth



**SR-104**  
Step Shank  
**LBS | 2.6 ea.**  
**PN | 850024**

**15 pc. Bucket**  
**LBS | 37.95**  
**PN | 850207**

**STRATA**

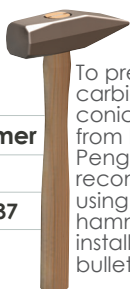


**S4-1**  
Step Shank  
**LBS | 2.6 ea.**  
**PN | 850038**

**15 pc. Bucket**  
**LBS | 39**  
**PN | 850211**

Pallet quantities  
available on  
conical teeth.

## ACCESSORIES | Installation & Removal Tools



**Soft Hammer**  
**LBS | 3.5**  
**PN | 137737**

To prevent carbide on conical teeth from breaking, Pengo highly recommends using a soft hammer during installation of bullet teeth.



**C30 Puller**  
For 1" Shank  
Conical Teeth  
**LBS | 3**  
**PN | 134090**



**BZ-12 Puller**  
For Step Shank  
Conical Teeth  
**LBS | 3**  
**PN | 850043**

For ease of conical  
tooth removal use  
these designated  
pullers for  
1" and  
Step Shank  
Conical Teeth.

# TRIDENT

U.S. PATENT NO, D778,967

One Holder, Three Teeth for Pengo Foundation Augers!



**NRH-100**  
Fits 1" shank  
tooth  
**LBS | 2.4 ea.**  
**PN | 990088**



**NRW-100**  
**LBS | 1.33 ea.**  
**PN | 990098**



**STRATA**



**SR-100**  
**LBS | .56 ea.**  
**PN | 850023**



**NR-100**  
**LBS | .99 ea.**  
**PN | 990092**



**NRH-3038**  
Fits Step  
shank tooth  
**LBS | 4.86 ea.**  
**PN | 990086**



**NRW-122**  
**LBS | 4.5 ea.**  
**PN | 990096**



**STRATA**

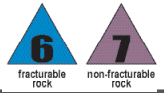


**SR-122**  
**LBS | 2.6 ea.**  
**PN | 850034**



**NR-122**  
**LBS | 2.46 ea.**  
**PN | 990089**

# AGGRESSIVE SPIRAL ROCK AUGER



## PARTS | Pilot Bits



**C31HD**  
with 1 Pin and Washer  
**LBS | 30**  
**PN | 135913**



**C31HD**  
with Nut and Bolt  
**LBS | 30**  
**PN | 135936**



**B47-10**  
with 4" square stem  
**LBS | 72**  
**PN | 137965**



**C4-1**  
with 2.5" square stem  
**LBS | 30**  
**PN | 135971**

**2.5 Adapter**  
**LBS | 17.84**  
**PN | 151598**

**2.5 Adapter**  
**LBS | 17.84**  
**PN | 151598**

**4" Adapter**  
**LBS | 43**  
**PN | 135904**

**2.5 Adapter**  
**LBS | 17.84**  
**PN | 151598**

## PARTS | Conical Teeth



**S31-HD**  
1" Shank  
**LBS | 1.1 ea.**  
**PN | 850037**



**S-31**  
1" Shank  
**LBS | 1.05 ea.**  
**PN | 850026**



**S-22**  
Step Shank  
**LBS | 2.6 ea.**  
**PN | 850039**



**SR-104**  
Step Shank  
**LBS | 2.6 ea.**  
**PN | 850024**



**S4-1**  
Step Shank  
**LBS | 2.6 ea.**  
**PN | 850038**

**35 pc. Bucket**  
**LBS | 38.5**  
**PN | 850210**

**35 pc. Bucket**  
**LBS | 36.75**  
**PN | 850208**

**10 pc. Bucket**  
**LBS | 26**  
**PN | NA**

**15 pc. Bucket**  
**LBS | 37.95**  
**PN | 850207**

**15 pc. Bucket**  
**LBS | 39**  
**PN | 850211**

P30 Holder  
12 pc bucket  
PN 850224



For 1" Shank Conical Teeth

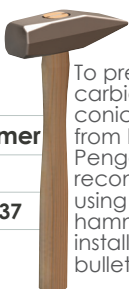
P4 Holder  
8 pc bucket  
PN 850225



For Step Shank Conical Teeth

Pallet quantities available on conical teeth.

## ACCESSORIES | Installation & Removal Tools



**Soft Hammer**  
**LBS | 3.5**  
**PN | 137737**

To prevent carbide on conical teeth from breaking, Pengo highly recommends using a soft hammer during installation of bullet teeth.



**C30 Puller**  
For 1" Shank Conical Teeth  
**LBS | 3**  
**PN | 134090**



**BZ-12 Puller**  
For Step Shank Conical Teeth  
**LBS | 3**  
**PN | 850043**

For ease of conical tooth removal use these designated pullers for 1" and Step Shank Conical Teeth.

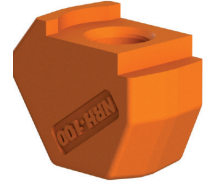
## TRIDENT

U.S. PATENT NO. D778,967

One Holder, Three Teeth for Pengo Foundation Augers!



**NRH-100**  
Fits 1" shank tooth  
**LBS | 2.4 ea.**  
**PN | 990088**



**NRW-100**  
**LBS | 1.33 ea.**  
**PN | 990098**



**SR-100**  
**LBS | .56 ea.**  
**PN | 850023**



**NR-100**  
**LBS | .99 ea.**  
**PN | 990092**



**NRH-3038**  
Fits Step shank tooth  
**LBS | 4.86 ea.**  
**PN | 990086**



**NRW-122**  
**LBS | 4.5 ea.**  
**PN | 990096**



**SR-122**  
**LBS | 2.6 ea.**  
**PN | 850034**



**NR-122**  
**LBS | 2.46 ea.**  
**PN | 990089**

