

PRESSURE DIGGER DIRT



AUGERS | 30" Overall Length

ITEM	DIA	NO. 2070 TEETH	NO. 2072 TEETH	S-250 PN	S-300 PN	S-350 PN	S-400 PN
16-PDD-30	16"	0	2		102945		
28-PDD-30	28"	4	2			102593	
30-PDD-30	30"	4	2	PNG102819			PNG102995
36-PDD-30	36"	6	2				PNG102996
42-PDD-30	42"	8	2			136345	PNG102997
48-PDD-30	48"	10	2		PNG102415	136346	

PARTS | Pilot Bits

TF-1000
LBS 43
PN 137348
Uses S-250 Pilot Adapter
PN 151598



Heavy-duty dirt pilot with 2 1/2" square stem for easy installation.

THE NUTS & BOLTS:

Included with the TF-1000 Pilot Bit assembly.

PARTS | Fas-N-Lok® Dirt Teeth

2070 Dirt
LBS 2
PN 140002



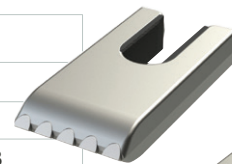
2072 Dirt
LBS 2.3
PN 140000



FAS-N-LOK® Dirt Teeth have vulcanized rubber attached to tooth thus making installation quick and easy.

PARTS | Fas-N-Lok® Carbide Teeth

2077
LBS 2.3
PN 140003



2078
LBS 2.4
PN 140004



Drift Punch

LBS .8
PN 137750



Use the Drift Punch for easy removal.