

RS-6X ANCHOR DRIVE

SINGLE SPEED DRIVE UNIT | PN 610659

used for anchor installation



Highly Efficient
Gearbox designed
for long duty cycles →

Shortest Overall
Length and Smallest
Unit Diameter
In the Industry →

Lightweight!
Only 87 lbs. →



DID YOU KNOW:
The RS-6X
hand-held drive
can easily be
converted to use
on a skid steer or
mini excavator.
Just attach the RS-6
bail assembly and
you are set to go.

HYDRAULIC MOTOR INFORMATION

Displacement	18.7 cu/in (306cc)
Motor Type	Single Speed Bi-Directional
Motor Output Shaft	1" 6B Spline
Motor Mount	SAE - A 2 Bolt
Motor Ports	3/4" - 16 O-Ring
Cross Over Pressure Relief	Set at 2700 PSI

PLANETARY GEARBOX INFORMATION

Gearbox Type	Planetary Two Stage
Reduction Ratio	13.29:1
Output Shaft	2" Hex
Internal Oil Capacity	.50 Gallons
Oil Type	SAE 80W90 GL-5
Shaft Pull Out (lbs.)	3,000

EXCAVATOR SIZE

NA

CONNECTIONS

HEX

2"

WEIGHT

LBS | 87

NOT RECOMMENDED
FOR DRILLING

TRULINK TORQUE PIN

Not applicable with this model.



The light weight RS-6X offers the shortest overall length and smallest diameter and will be perfect for any hand-held operation to install anchors in those hard to reach places.

RS-6X ANCHOR DRIVE

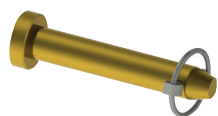
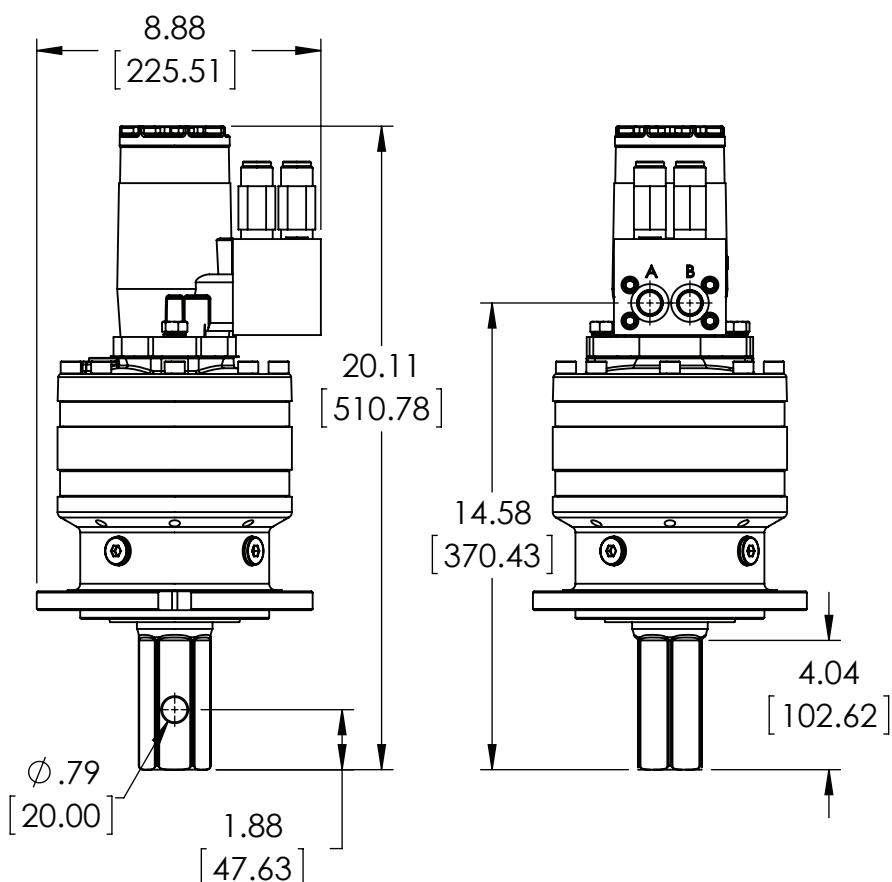
REFERENCE SPEED CHART

Flow GPM (Liter)	Speed (rpm)	
10 (38)	9	
15 (56)	14	
20 (75)	19	
25 (94)	23	

REFERENCE TORQUE CHART

Pressure (psi)	THEORETICAL Torque (ft/lb)	ACTUAL Torque (ft/lb)
1000	3292	2699
1300	4280	3510
1500	4939	4050
1700	5597	4590
1900	6256	5130
2100	6915	5670
2300	7573	6210
2500	9232	6750

Note that both theoretical and actual torque values are listed, but that Pengo recommends to go by ACTUAL torque listings.



Pin for 2" Hex Output

LBS | 2

PN | 135015

2" Hex Drive Tool

LBS | 20

PN | 661342



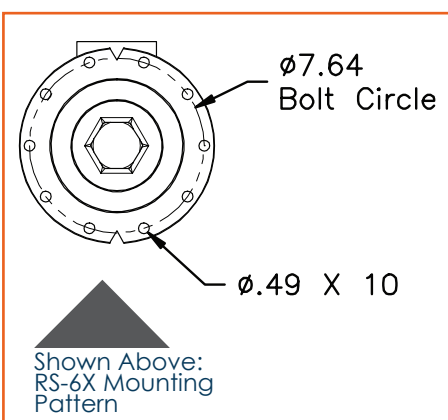
Add the RS-6 Bail Assembly to use on Skid Steer or Mini Excavator



RS-6 Bail Assembly

LBS | 17

PN | 610698



Pengo lists output speeds at both theoretical and actual. Actual torque numbers are NOT listed at 100% efficiency. Maximum efficiencies have been applied to the torque and speed charts according to the manufacturer's recommendations. Speed and torque output are dependent on the overall system efficiencies associated with the prime movers hydraulic system. When the purchaser is determining criteria for specific applications please contact Pengo. Pengo has made every attempt to present accurate and suitable information published in this document. This document should be used for information and comparative purposes only. When application-specific information is required, please contact Pengo.

RS-6 ANCHOR DRIVE

SINGLE SPEED DRIVE UNIT | PN 610658



used for anchor installation

Pengo Introduced the RS-6 to the Revolution Drive line in 2014. This unit was designed to provide anchor installers a small, light-weight unit to be used in hard to reach places.



EXCAVATOR SIZE

3T - 6T

CONNECTIONS

HEX

2"

WEIGHT

LBS | 165

NOT RECOMMENDED
FOR DRILLING

TRULINK TORQUE PIN

DT-5 is outfitted to fit these
TruLink® Torque Monitor Systems.



TruLink 2.0 Class 1
with 7" Display
PN | 615070

Kits include Pin, Displays, Anti-Rotation Block,
Mount, Cable and Stylus.



The RS-6 Anchor Drive is similar to the RX-6 but includes the bail housing. The RS-6 drives will attach to your skid steer or mini-excavator and it offers the shortest overall length and smallest diameter for drilling. The RS-6 will allow your prime mover access to the tight spaces.

HYDRAULIC MOTOR INFORMATION

Displacement	18.7 cu/in (306cc)
Motor Type	Single Speed Bi-Directional
Motor Output Shaft	1" 6B Spline
Motor Mount	SAE - A 2 Bolt
Motor Ports	3/4" - 16 O-Ring
Cross Over Pressure Relief	Set at 2700 PSI

PLANETARY GEARBOX INFORMATION

Gearbox Type	Planetary Two Stage
Reduction Ratio	13.29:1
Output Shaft	2" Hex
Internal Oil Capacity	.50 Gallons
Oil Type	SAE 80W90 GL-5
Shaft Pull Out (lbs.)	3,000

RS-6 ANCHOR DRIVE

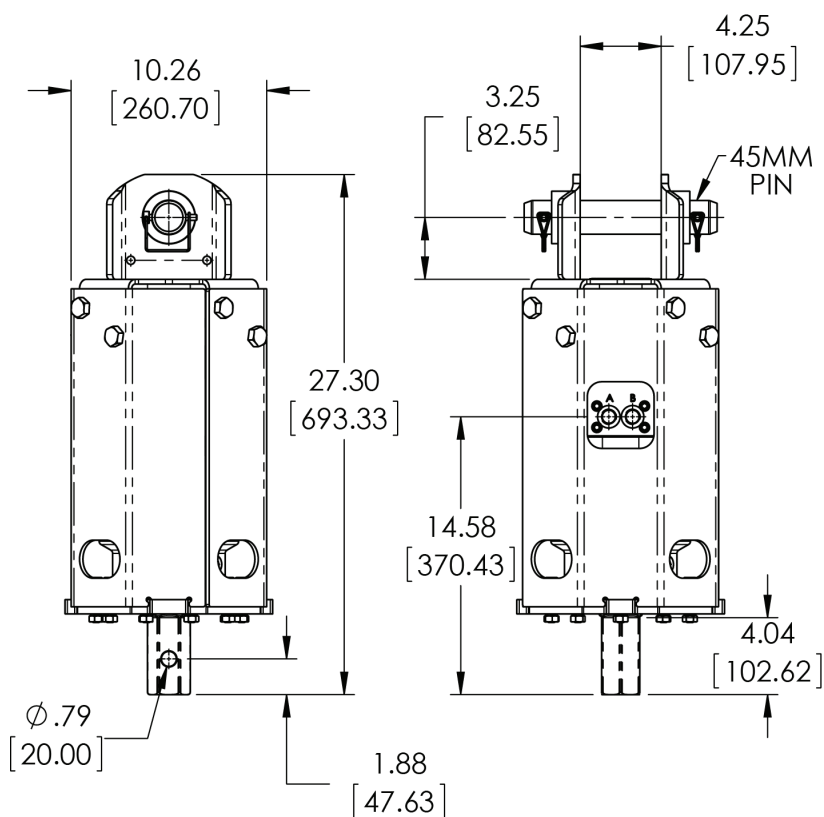
REFERENCE SPEED CHART

Flow GPM (Liter)	Speed (rpm)	
10 (38)	9	
15 (56)	14	
20 (75)	19	
25 (94)	23	

REFERENCE TORQUE CHART

Pressure (psi)	THEORETICAL Torque (ft/lb)	ACTUAL Torque (ft/lb)
1000	3292	2699
1300	4280	3510
1500	4939	4050
1700	5597	4590
1900	6256	5130
2100	6915	5670
2300	7573	6210
2500	9232	6750

Note that both theoretical and actual torque values are listed, but that Pengo recommends to go by ACTUAL torque listings.



45MM Link Arm

LBS | 46

PN | 660555

45MM Pin

LBS | 7

PN | 660558

2" Hex Drive Tool

LBS | 20

PN | 661342

Pin for 2" Hex Output

LBS | 2

PN | 135015

MOUNTS for RS-6

A Pengo Exclusive!
The Long Reach Mount for Skid Steer provides maximum ground clearance of 7' to 11' and increased height capability.



Universal Long Reach

LBS | 361

PN | 661318



Universal Mount

LBS | 201

PN | 661111

Pengo lists output speeds at both theoretical and actual. Actual torque numbers are NOT listed at 100% efficiency. Maximum efficiencies have been applied to the torque and speed charts according to the manufacturer's recommendations. Speed and torque output are dependent on the overall system efficiencies associated with the prime movers hydraulic system. When the purchaser is determining criteria for specific applications please contact Pengo. Pengo has made every attempt to present accurate and suitable information published in this document. This document should be used for information and comparative purposes only. When application-specific information is required, please contact Pengo.

RS-7X ANCHOR DRIVE

SINGLE SPEED DRIVE UNIT | PN 610206



used for anchor installation

DID YOU KNOW:

The RS-7X hand-held drive can easily be converted to use on a skid steer or mini excavator. Just attach the RS-7 bail assembly and you are set to go.

Standard cross-over pressure relief system that is designed to protect the motor from pressure spikes and potential overload conditions

Highly Efficient Gearbox designed for long duty cycles

2" Hex Output Shaft



EXCAVATOR SIZE

NA

CONNECTIONS

HEX

2"

WEIGHT

LBS | 120

NOT RECOMMENDED FOR DRILLING

TRULINK TORQUE PIN

Not applicable with this model.



Designed to fit with stand-alone power packs, the RS-7X provides the versatility to be mounted to a skid steer when the bail assembly (sold separately) is attached. This anchor drive allows you to work in small hard to reach places.

HYDRAULIC MOTOR INFORMATION

Displacement	18.7 cu/in (306cc)
Motor Type	Single Speed Bi-Directional
Motor Output Shaft	1" 6B Spline
Motor Mount	SAE - A 2 Bolt
Motor Ports	3/4" - 16 O-Ring
Cross Over Pressure Relief	Set at 2700 PSI

PLANETARY GEARBOX INFORMATION

Gearbox Type	Planetary Two Stage
Reduction Ratio	14.79:1
Output Shaft	2" Hex
Internal Oil Capacity	.50 Gallons
Oil Type	SAE 80W90 GL-5
Shaft Pull Out (lbs.)	3,000

RS-7X ANCHOR DRIVE

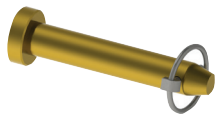
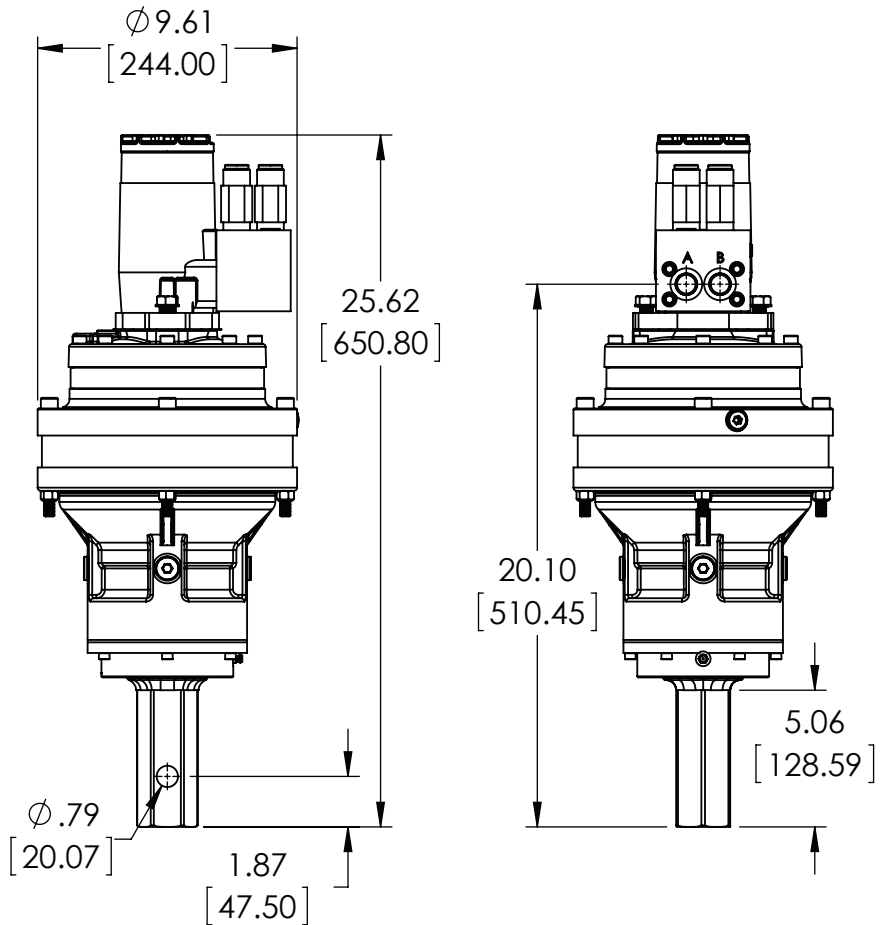
REFERENCE SPEED CHART

Flow GPM (Liter)	Speed (rpm)	
10 (38)	7	
15 (56)	10	
20 (75)	14	
25 (94)	17	

REFERENCE TORQUE CHART

Pressure (psi)	THEORETICAL Torque (ft/lb)	ACTUAL Torque (ft/lb)
1000	3664	3004
1300	4763	3906
1500	5496	4507
1700	6229	5108
1900	6962	5709
2100	7695	6310
2300	8428	6911
2500	9161	7512

Note that both theoretical and actual torque values are listed, but that Pengo recommends to go by ACTUAL torque listings.



Pin for 2" Hex Output

LBS | 2

PN | 135015

2" Hex Drive Tool

LBS | 20

PN | 661342



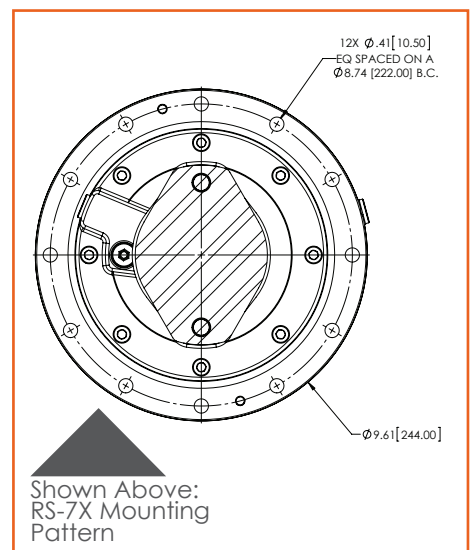
Add the RS-7 Bail Assembly to use on Skid Steer or Mini Excavator



RS-7 Bail Assembly

LBS | 17

PN | 610288



Pengo lists output speeds at both theoretical and actual. Actual torque numbers are NOT listed at 100% efficiency. Maximum efficiencies have been applied to the torque and speed charts according to the manufacturer's recommendations. Speed and torque output are dependent on the overall system efficiencies associated with the prime movers hydraulic system. When the purchaser is determining criteria for specific applications please contact Pengo. Pengo has made every attempt to present accurate and suitable information published in this document. This document should be used for information and comparative purposes only. When application-specific information is required, please contact Pengo.

RS-7 ANCHOR DRIVE

SINGLE SPEED DRIVE UNIT | PN 610207

used for anchor installation



Removable
Top Section →

Standard cross-
over pressure
relief system
that is designed
to protect the
motor from
pressure spikes
and potential
overload
conditions →

Highly Efficient
Gearbox →
designed for
long duty cycles

2" Hex
Output Shaft →



EXCAVATOR SIZE

3T - 6T

CONNECTIONS

HEX

2"

WEIGHT

LBS | 170

NOT RECOMMENDED
FOR DRILLING

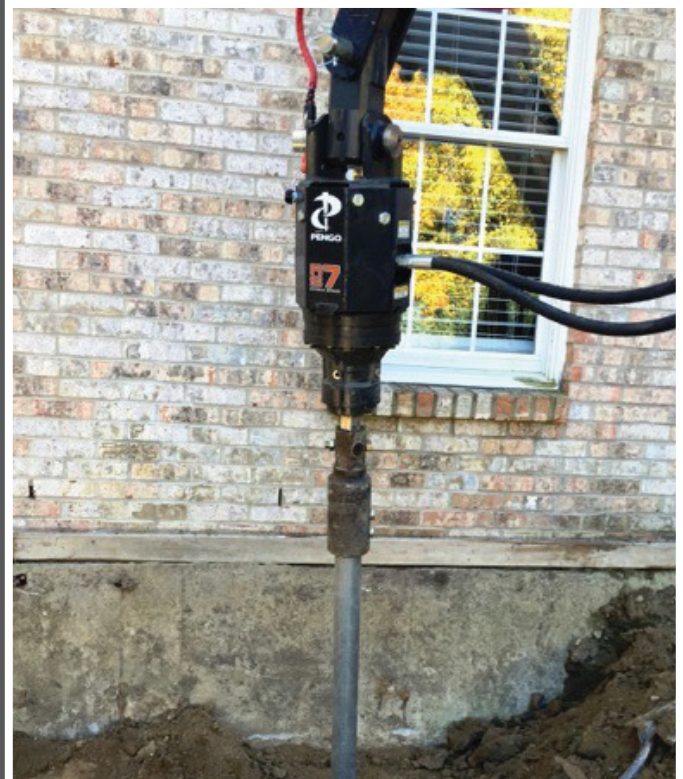
TRULINK TORQUE PIN

RS-7 is outfitted to fit these
TruLink® Torque Monitor Systems.



TruLink 2.0 Class 1
with 7" Display
PN | 615070

Kits include Pin, Displays, Anti-Rotation Block,
Mount, Cable and Stylus.



HYDRAULIC MOTOR INFORMATION

Displacement	18.7 cu/in (306cc)
Motor Type	Single Speed Bi-Directional
Motor Output Shaft	1" 6B Spline
Motor Mount	SAE - A 2 Bolt
Motor Ports	3/4" - 16 O-Ring
Cross Over Pressure Relief	Set at 2700 PSI

PLANETARY GEARBOX INFORMATION

Gearbox Type	Planetary Two Stage
Reduction Ratio	14.79:1
Output Shaft	2" Hex
Internal Oil Capacity	.50 Gallons
Oil Type	SAE 80W90 GL-5
Shaft Pull Out (lbs.)	7,000

Choose the single speed RS-7 anchor drive for your next installation project. The standard cross-over pressure relief system will protect the hydraulic motor from pressure spikes and potential overload conditions. Add a mount and the TruLink® for the complete drive system.

RS-7 ANCHOR DRIVE

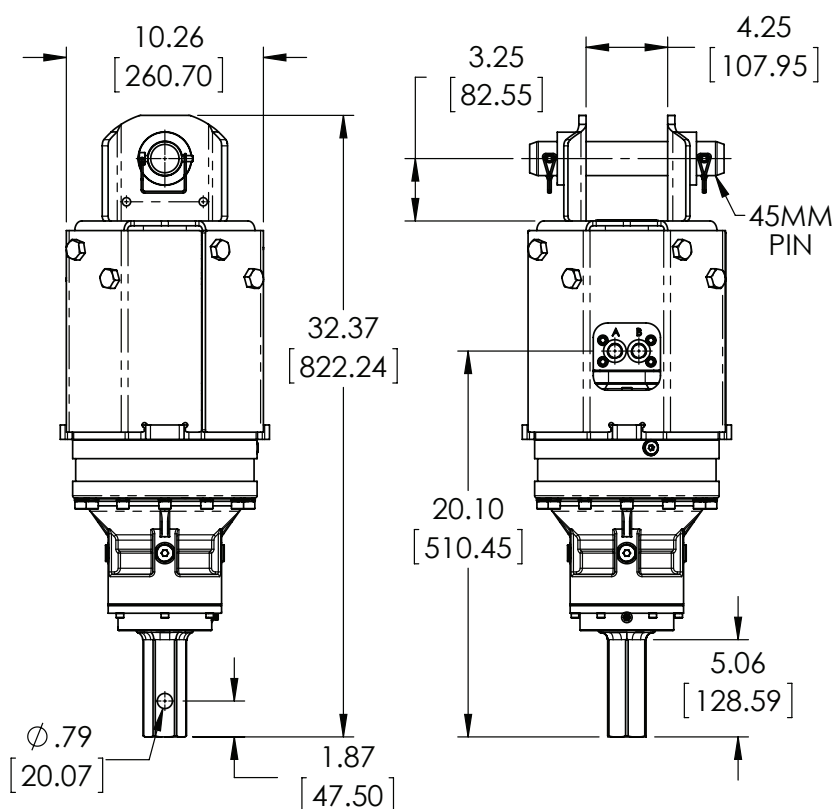
REFERENCE SPEED CHART

Flow GPM (Liter)	Speed (rpm)	
10 (38)	7	
15 (56)	10	
20 (75)	14	
25 (94)	17	

REFERENCE TORQUE CHART

Pressure (psi)	THEORETICAL Torque (ft/lb)	ACTUAL Torque (ft/lb)
1000	3664	3004
1300	4763	3906
1500	5496	4507
1700	6229	5108
1900	6962	5709
2100	7695	6310
2300	8428	6911
2500	9161	7512

Note that both theoretical and actual torque values are listed, but that Pengo recommends to go by ACTUAL torque listings.



45MM Link Arm

LBS | 46

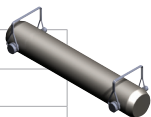
PN | 660555



45MM Pin

LBS | 7

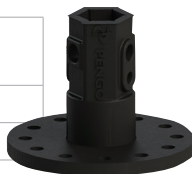
PN | 660558



2" Hex Drive Tool

LBS | 20

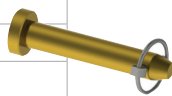
PN | 661342



Pin for 2" Hex Output

LBS | 2

PN | 135015



MOUNTS for RS-7

A Pengo Exclusive!
The Long Reach Mount for Skid Steer provides maximum ground clearance of 7' to 11' and increased height capability.



Universal Long Reach

LBS | 361

PN | 661318



Universal Mount

LBS | 201

PN | 661111

Pengo lists output speeds at both theoretical and actual. Actual torque numbers are NOT listed at 100% efficiency. Maximum efficiencies have been applied to the torque and speed charts according to the manufacturer's recommendations. Speed and torque output are dependent on the overall system efficiencies associated with the prime movers hydraulic system. When the purchaser is determining criteria for specific applications please contact Pengo. Pengo has made every attempt to present accurate and suitable information published in this document. This document should be used for information and comparative purposes only. When application-specific information is required, please contact Pengo.

RS-12 ANCHOR DRIVE

SINGLE SPEED DRIVE UNIT | PN 610057

used for anchor installation



EXCAVATOR SIZE

6T - 12T

CONNECTIONS

HEX 2 1/2"

WEIGHT

LBS | 546

NOT RECOMMENDED FOR DRILLING

TRULINK TORQUE PIN

RS-12 is outfitted to fit these TruLink® Torque Monitor Systems.



TruLink 2.0 Class 1 with 7" Display
PN | 615070

Kits include Pin, Displays, Anti-Rotation Block, Mount, Cable and Stylus.



HYDRAULIC MOTOR INFORMATION

Displacement	23.9 cu/in (390cc)
Motor Type	Single Speed Bi-Directional
Motor Output Shaft	1 1/2" Spline 17T
Motor Mount	SAE - C 4 Bolt
Motor Ports	1 1/16" - 12 O-Ring
Cross Over Pressure Relief	Set at 3100 PSI

PLANETARY GEARBOX INFORMATION

Gearbox Type	Planetary Two Stage
Reduction Ratio	17.39:1
Output Shaft	2 1/2" Hex
Internal Oil Capacity	2.0 Gallons
Oil Type	SAE 80W90 GL-5
Shaft Pull Out (lbs.)	22,500

The single speed RS-12 is good for Mini-Excavators due to the low GPM requirements. With a standard cross-over pressure relief system and TruLink® compatibility, this drive will not disappoint on your next project.

RS-12 ANCHOR DRIVE

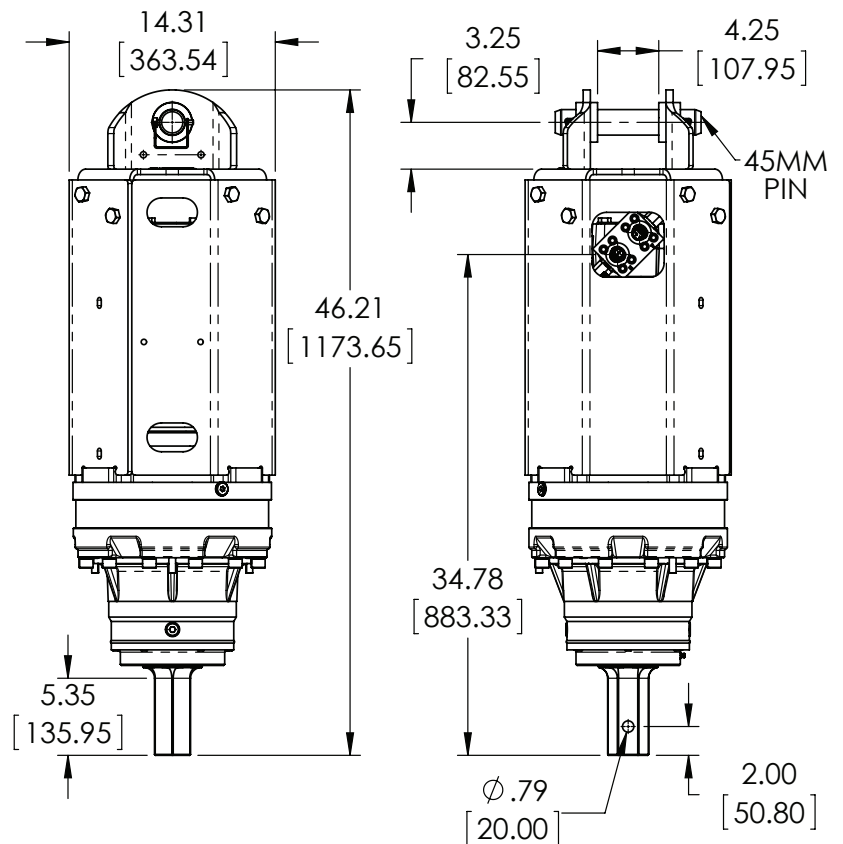
REFERENCE SPEED CHART

Flow GPM (Liter)	Speed (rpm)	
15 (56)	7	
20 (75)	9	
25 (94)	11	
30 (113)	13	
35 (132)	15	
40 (141)	18	

REFERENCE TORQUE CHART

Pressure (psi)	THEORETICAL Torque (ft/lb)	ACTUAL Torque (ft/lb)
1000	5491	4338
1200	6589	5205
1400	7688	6074
1600	8786	6941
1800	9884	7808
2000	10983	8677
2200	12081	9544
2400	13179	10411
2600	14278	11280
2800	15376	12147
3000	16474	13014

Note that both theoretical and actual torque values are listed, but that Pengo recommends to go by ACTUAL torque listings.



45MM Link Arm

LBS | 46

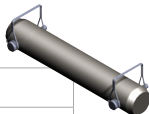
PN | 660555



45MM Pin

LBS | 7

PN | 660558



2 1/2" Hex Drive Tool

LBS | 28

PN | 158132



MOUNTS for RS-12

A Pengo Exclusive! The Long Reach Mount for Skid Steer provides maximum ground clearance of 7' to 11' and increased height capability.

Universal Long Reach

LBS | 361

PN | 661318

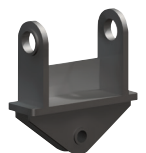
Universal Mount

LBS | 201

PN | 661111



Pengo offers a complete excavator mounting systems for the RS-12 unit. These mounts can be mounted directly to the stick or designed to work with an existing quick coupler.



Quick Coupler

End of Stick

Excavator Mounts allow for maximum movement to ensure the Drive always hangs true to the ground.

Custom mounts can be designed for specific applications.

Pengo lists output speeds at both theoretical and actual. Actual torque numbers are NOT listed at 100% efficiency. Maximum efficiencies have been applied to the torque and speed charts according to the manufacturer's recommendations. Speed and torque output are dependent on the overall system efficiencies associated with the prime movers hydraulic system. When the purchaser is determining criteria for specific applications please contact Pengo. Pengo has made every attempt to present accurate and suitable information published in this document. This document should be used for information and comparative purposes only. When application-specific information is required, please contact Pengo.

RS-16 ANCHOR DRIVE



SINGLE SPEED DRIVE UNIT | PN 623133

used for anchor installation



EXCAVATOR SIZE

8T - 20T

CONNECTIONS

HEX

2 1/2"

WEIGHT

LBS | 650

NOT RECOMMENDED
FOR DRILLING

TRULINK TORQUE PIN

RS-16 is outfitted to fit these
TruLink® Torque Monitor Systems.



TruLink 2.0 Class 1
with 7" Display
PN | 615070

Kits include Pin, Displays, Anti-Rotation Block,
Mount, Cable and Stylus.



HYDRAULIC MOTOR INFORMATION

Displacement	19 cu/in (310cc)
Motor Type	Single Speed Bi-Directional
Motor Output Shaft	1 1/2" Spline 17T
Motor Mount	SAE - C 4 Bolt
Motor Ports	1 1/16" - 12 O-Ring
Cross Over Pressure Relief	Set at 3100 PSI

PLANETARY GEARBOX INFORMATION

Gearbox Type	Planetary Two Stage
Reduction Ratio	17.39:1
Output Shaft	2 1/2" Hex
Internal Oil Capacity	2.0 Gallons
Oil Type	SAE 80W90 GL-5
Shaft Pull Out (lbs.)	22,500

The RS-16, Pengo's newest addition to the anchor drive product line, provides significant torque capability in a compact package. The addition of a standard counter-balance valve reduces the amount of anchor kick-back often encountered during installation. The RS-16 is the perfect choice for excavators between 8T and 20T and like all Pengo anchor drives, the RS-16 is overbuilt to perform.

RS-16 ANCHOR DRIVE

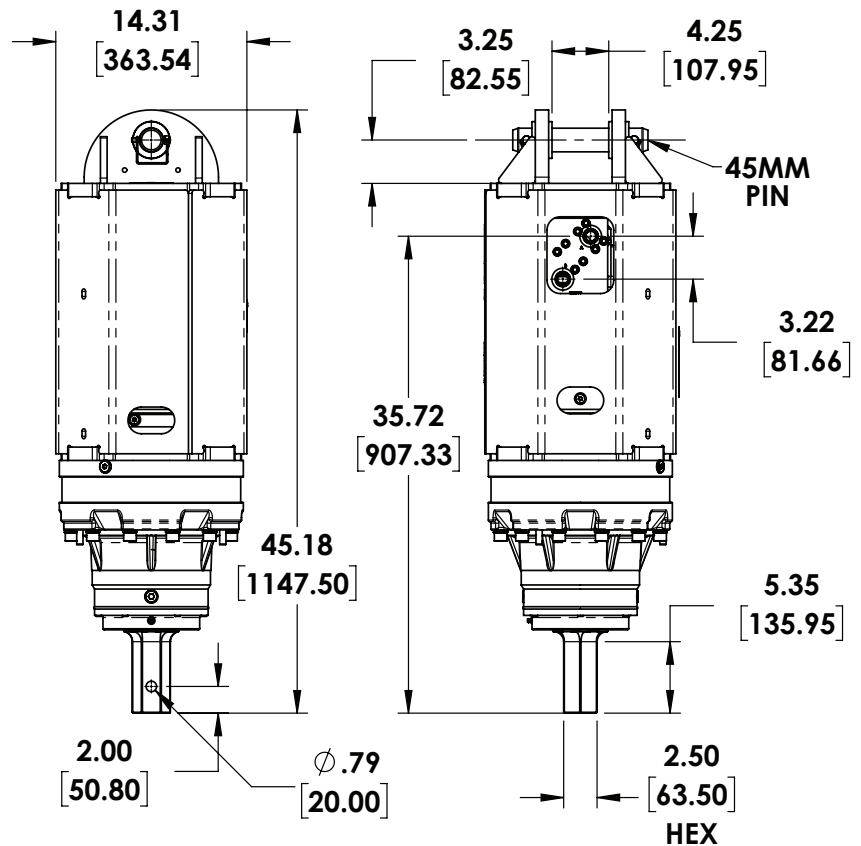
REFERENCE SPEED CHART

Flow GPM (Liter)	Speed (rpm)
15 (56)	7
20 (75)	9
25 (94)	12
30 (113)	14
35 (132)	16
40 (141)	19

REFERENCE TORQUE CHART

Pressure (psi)	THEORETICAL Torque (ft/lb)	ACTUAL Torque (ft/lb)
1000	6365	5347
1200	7638	6416
1400	8911	7485
1600	10185	8555
1800	11458	9625
2000	12731	10694
2200	14004	11763
2400	15277	12833
2600	16550	13902
2800	17823	14971
3000	19096	16041

Note that both theoretical and actual torque values are listed, but that Pengo recommends to go by ACTUAL torque listings.



45MM Link Arm

LBS | 46

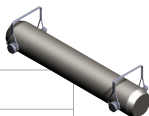
PN | 660555



45MM Pin

LBS | 7

PN | 660558



2 1/2" Hex Drive Tool

LBS | 28

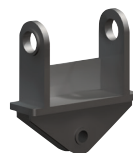
PN | 158132



MOUNTS for RS-16

Pengo offers a complete excavator mounting systems for the RS-16 unit. These mounts can be mounted directly to the stick or designed to work with an existing quick coupler.

End of Stick



Quick Coupler



Excavator Mounts allow for maximum movement to ensure the Drive always hangs true to the ground.

Custom mounts can be designed for specific applications.

Pengo lists output speeds at both theoretical and actual. Actual torque numbers are NOT listed at 100% efficiency. Maximum efficiencies have been applied to the torque and speed charts according to the manufacturer's recommendations. Speed and torque output are dependent on the overall system efficiencies associated with the prime movers hydraulic system. When the purchaser is determining criteria for specific applications please contact Pengo. Pengo has made every attempt to present accurate and suitable information published in this document. This document should be used for information and comparative purposes only. When application-specific information is required, please contact Pengo.